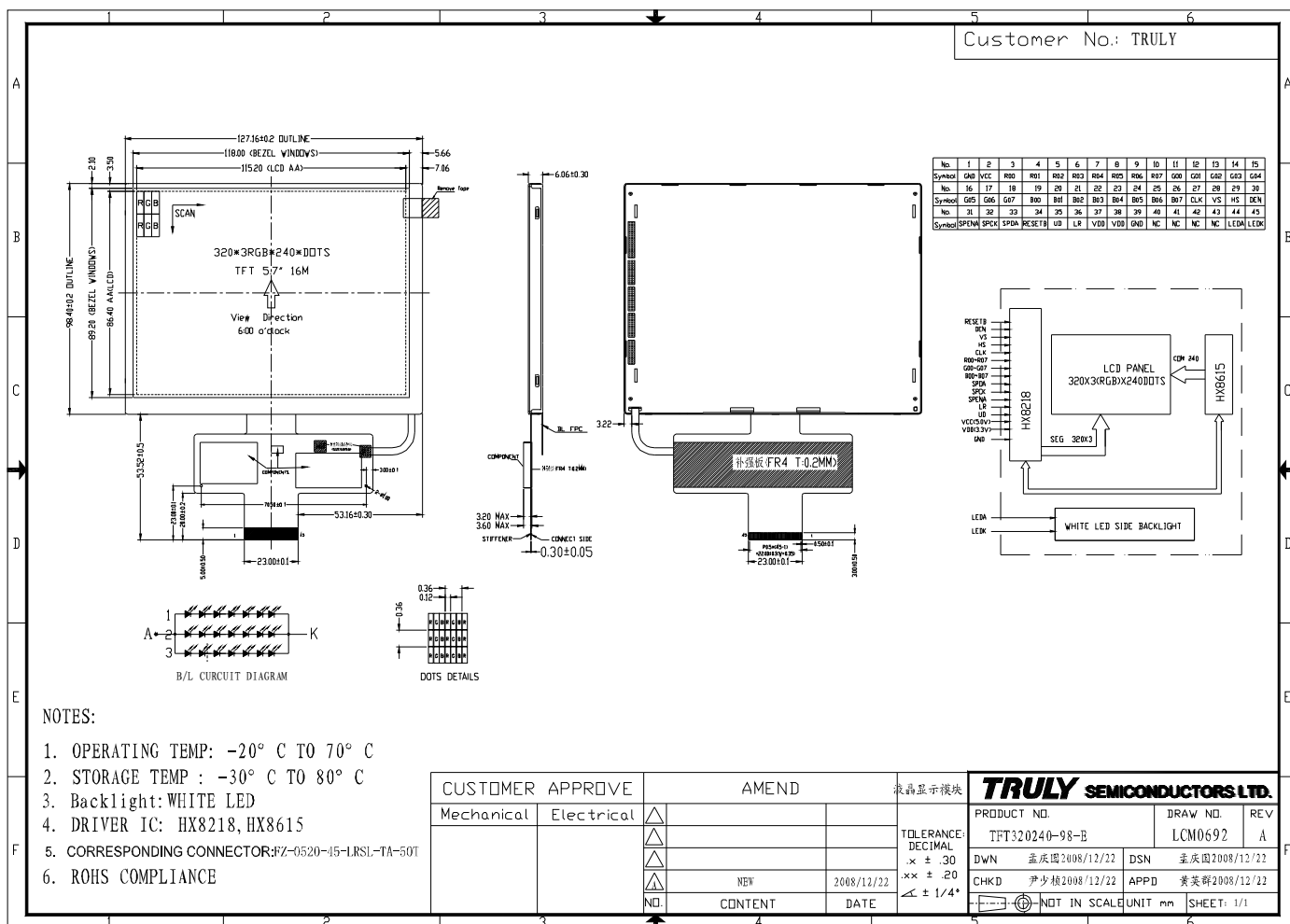


■ GENERAL INFORMATION

Item	Contents	Unit/note
LCD Type	TFT TRANSMISSIVE	/
Viewing direction	6:00 O' Clock	12:00 O' Clock (Good viewing)
Module area (W × H)	127.16 × 98.4	mm <sup>2</sup>
Active area (W×H)	115.20 × 86.40	mm <sup>2</sup>
Number of Dots	320 × 3(RGB) × 240	/
Pixel pitch (W × H)	0.36 × 0.36	mm <sup>2</sup>
Driver IC	HX8218, HX8615	/
Colors	16 M	/
Backlight Type	LED	/
Interface Type	RGB interface	/
Input voltage (VDD)	3.3	V
Input voltage (VCC)	5.0	V

■ EXTERNAL DIMENSIONS



**■ ABSOLUTE MAXIMUM RATINGS**

Parameter	Symbol	Min	Max	Unit
Supply voltage rank	$V_{CC} / V_{DD}$	-0.3	7.0	V
Input voltage	$V_{IN}$	-0.3	$V_{DD}+0.3$	V
Operating temperature	$T_{OP}$	-20	70	°C
Storage temperature	$T_{ST}$	-30	80	°C
Humidity	RH	-	90%(Max60°C)	RH

**■ ELECTRICAL CHARACTERISTICS**

## DC CHARACTERISTICS

Parameter	Symbol	Min	Typ	Max	Unit
Supply voltage for digital	$V_{DD}$	3.0	3.3	3.6	V
Supply voltage for analog	$V_{CC}$	3.8	5.0	5.5	V
Input Current	$I_{dd}$	-	99	198	mA
Input voltage 'H' level	$V_{IH}$	$0.7V_{DD}$	-	$V_{DD}$	V
Input voltage 'L' level	$V_{IL}$	0	-	$0.3V_{DD}$	V
Output voltage 'H' level	$V_{OH}$	$0.8V_{DD}$	-	$V_{DD}$	V
Output voltage 'L' level	$V_{OL}$	0	-	$0.2 V_{DD}$	V

**■ BACKLIGHT CHARACTERISTICS**

Item	Symbol	Min.	Typ.	Max.	Unit	Condition
Forward voltage	$V_f$	21.0	22.4	23.8	V	If=60 mA Ta=25°C
Luminance	$L_v$	5000	5600	6600	cd/m <sup>2</sup>	
Number of LED	-	7*3			Piece	
Connection mode	S/P	Serial / parallel			-	

Using condition: constant current driving method If=60 mA (+/-10%).

**■ TIMING OF POWER SUPPLY**

TBD