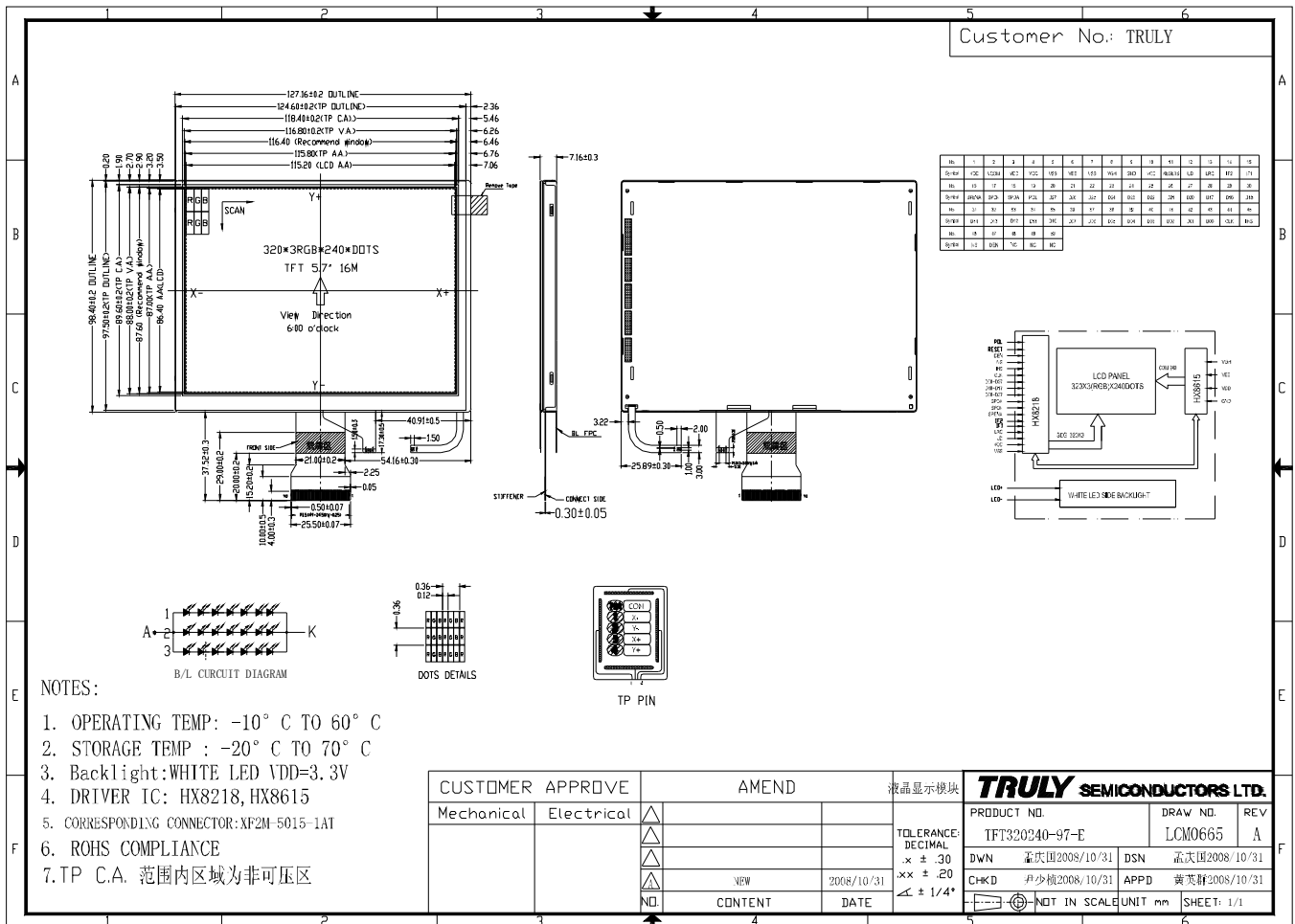


■ GENERAL INFORMATION

Item	Contents	Unit/note
LCD Type	TFT TRANSMISSIVE	/
Viewing direction	6:00 O' Clock	12 O' Clock (Good viewing)
Module area (W × H)	127.16 × 98.4	mm ²
Active area (W×H)	115.20 × 86.40	mm ²
Number of Dots	320 × 3(RGB) × 240	/
Dot size (W × H)	0.36 × 0.36	mm ²
Driver IC	HX8218, HX8615	/
Colors	16 M	/
Backlight Type	LED	/
Interface Type	RGB interface, CCIR601,CCIR656	/
Input voltage (VDD)	3.3	V
Input voltage (VCC)	5.0	V

■ EXTERNAL DIMENSIONS



■ABSOLUTE MAXIMUM RATINGS

Parameter	Symbol	Min	Max	Unit
Supply voltage rank	V_{CC}/V_{DD}	-0.3	7.0	V
Input voltage	V_{IN}	-0.3	$V_{DD}+0.3$	V
Operating temperature	T_{OP}	-20	70	°C
Storage temperature	T_{ST}	-30	80	°C
Humidity	RH	-	90%(Max60°C)	RH

■ELECTRICAL CHARACTERISTICS

DC CHARACTERISTICS

Parameter	Symbol	Min	Typ	Max	Unit
Supply voltage for digital	V_{DD}	3.0	3.3	3.6	V
Supply voltage for analog	V_{CC}	3.8	5.0	5.5	V
Input Current	I_{dd}	-	10.40	20.80	mA
Input voltage 'H' level	V_{IH}	$0.7V_{CC}$	-	V_{CC}	V
Input voltage 'L' level	V_{IL}	0	-	$0.3V_{CC}$	V
Output voltage 'H' level	V_{OH}	$0.8V_{CC}$	-	V_{CC}	V
Output voltage 'L' level	V_{OL}	0	-	$0.2 V_{CC}$	V

■ BACKLIGHT CHARACTERISTICS

Item	Symbol	Min.	Typ.	Max.	Unit	Condition
Forward voltage	V_f	21.0	22.4	23.8	V	If=60 mA Ta=25°C
Luminance	L_v	5000	5600	6600	cd/m ²	
Number of LED	-	7*3			Piece	
Connection mode	S/P	Serial / parallel			-	

Using condition: constant current driving method If=60 mA (+/-10%).