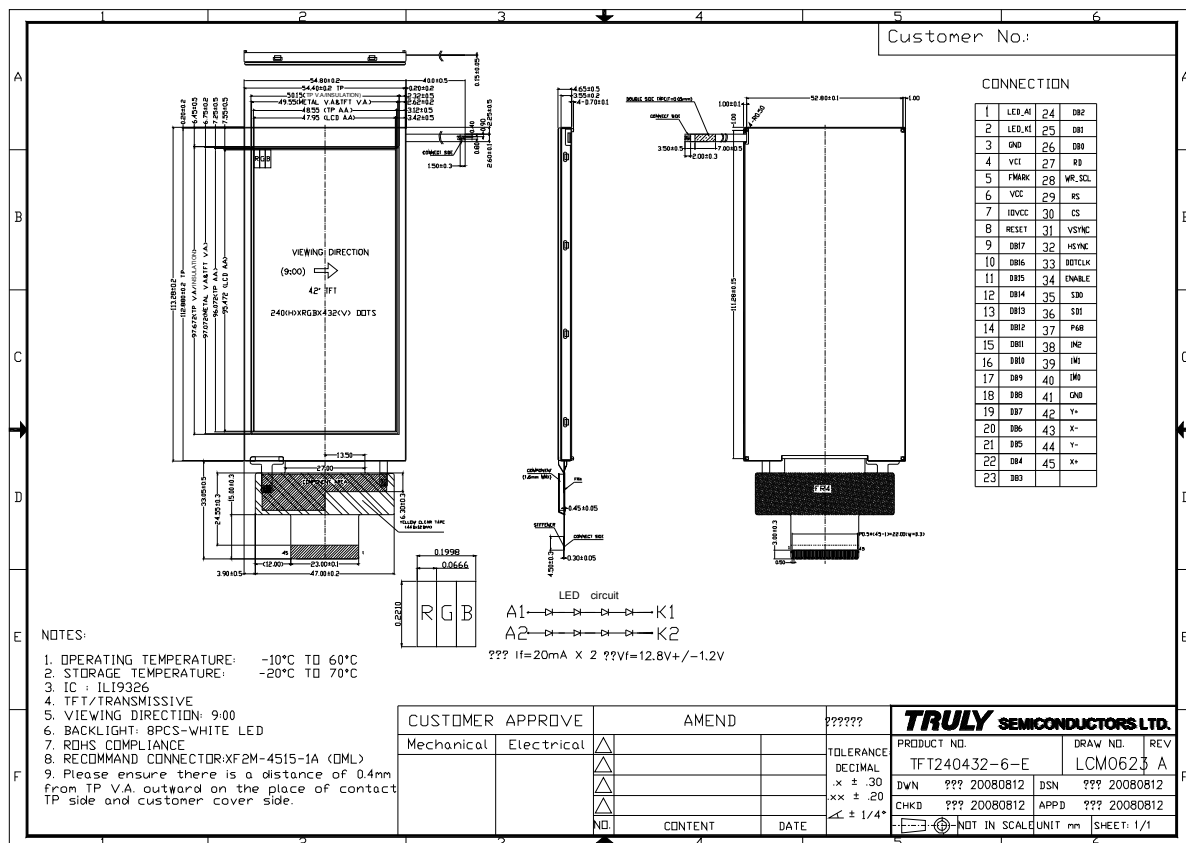


GENERAL INFORMATION

Item	Contents	Unit/note
LCD type	TFT/TRANSMISSIVE	/
Viewing direction	9:00 O' Clock	3 O' Clock (Good viewing)
Module area (W × H)	54.8 × 113.28	mm ²
Active area (W×H)	47.950 × 95.472	mm ²
Number of Dots	240(H) × RGB × 432(V)	/
Dot size (W × H)	0.0666 × 0.2210	mm ²
Dot pitch (W × H)	0.1998 × 0.2210	mm ²
Driver IC	ILI9326	/
Backlight Type	LED	/
Interface Type	MPU Parallel,SPI Interface, RGB parallel	/

EXTERNAL DIMENSIONS



n ABSOLUTE MAXIMUM RATINGS

Parameter	Symbol	Min	Max	Unit
Power Supply Voltage1	IOV _{CC} , V _{CC}	-0.3	4.6	V
Power Supply Voltage2	V _{CI} -AGND	-0.3	4.6	V
Operating temperature	T _{OP}	-10	60	°C
Storage temperature	T _{ST}	-20	70	°C
Humidity	RH		90%(Max60°C)	RH

n ELECTRICAL CHARACTERISTICS

DC CHARACTERISTICS

Parameter	Symbol	Min	Typ	Max	Unit
Logic power supply voltage	V _{CC}	2.4	2.8	3.3	V
I/O interface supply voltage	IOV _{CC}	1.65	1.8/2.8	3.3	V
Analog power supply voltage	V _{CI}	2.5	2.8	3.3	V
Input Current	I _{DD}	-	12.8	25.6	mA
Input voltage 'H' level	V _{IH}	0.8 IOV _{CC}	-	IOV _{CC}	V
Input voltage 'L' level	V _{IL}	-0.3	-	0.2 IOV _{CC}	V
Output voltage 'H' level	V _{OH}	0.8 IOV _{CC}	-	-	V
Output voltage 'L' level	V _{OL}	-	-	0.2 IOV _{CC}	V

n TIMING OF POWER SUPPLY

PLEASE REFER TO THE DRIVER IC SPECIFICATION.

n BACKLIGHT CHARACTERISTICS

Item	Symbol	Min.	Typ.	Max.	Unit	Condition
Forward voltage	V _f	11.6	12.8	14.0	V	If=20×2 mA
Luminance	L _v	4000	4400	4800	cd/m ²	
Number of LED	-	4×2			Piece	-
Connection mode	S/P	Serial/Parallel			-	-

Using condition: constant current driving method If= 20×2mA (+/-10%)