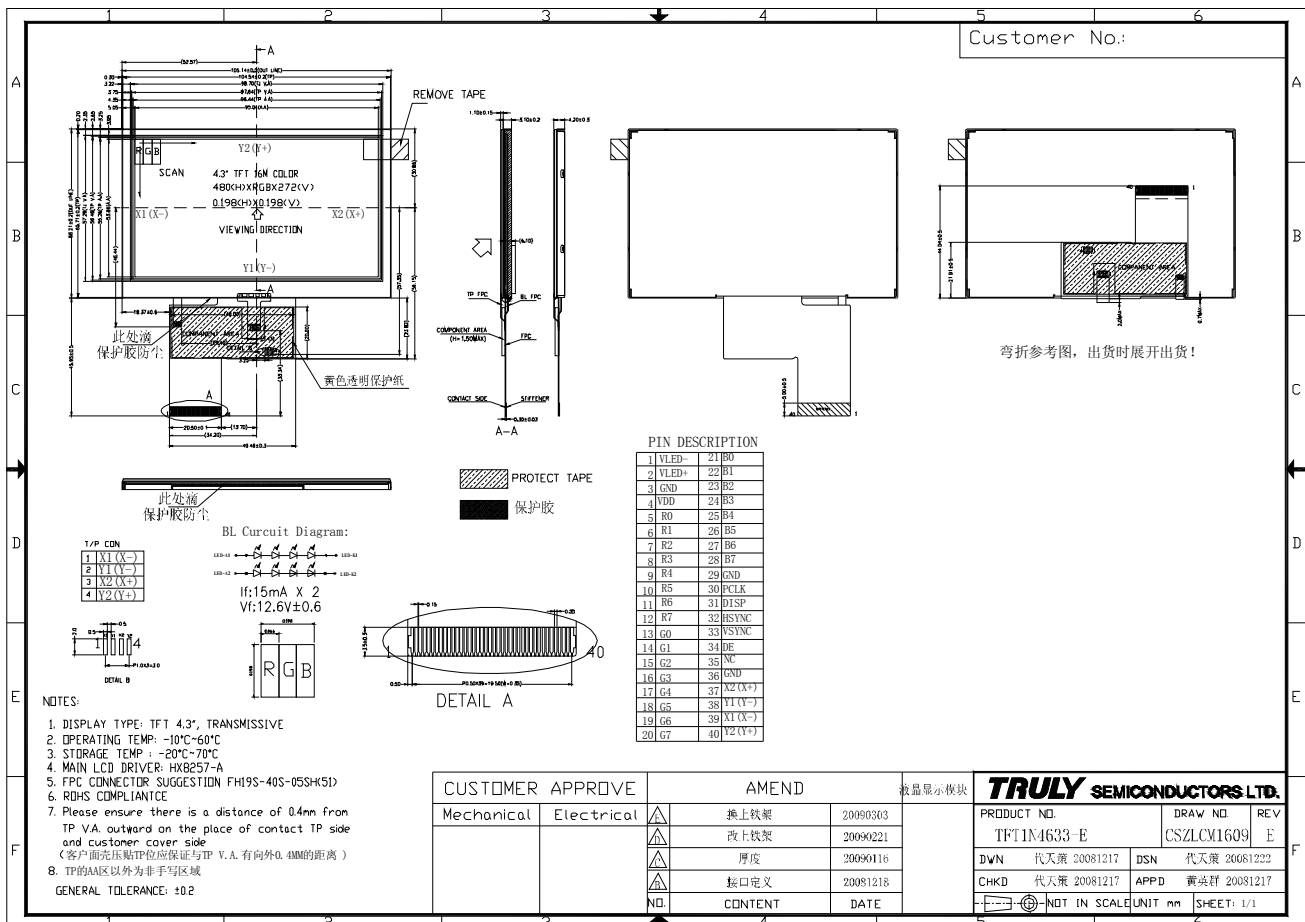


GENERAL INFORMATION

Item	Contents	Unit/Note
LCD type	TFT TRANSMISSIVE	/
Viewing direction	6:00 O' Clock	12:00 O' Clock (Good viewing)
Module area (W × H)	105.14 × 66.21	mm ²
Active area (W×H)	95.04 × 53.86	mm ²
Number of Dots	480(H) × RGB × 272(V)	/
Driver IC	HX8257-A	/
Color	16.8M	/
Backlight Type	LED	/
Module Power consumption	420(typ)	mw
Interface Type	24 Bit	/
Input voltage	3.3	V

EXTERNAL DIMENSIONS



■ ABSOLUTE MAXIMUM RATINGS

Parameter	Symbol	Min	Max	Unit
Logic power supply	V _{DD}	-0.3	5.0	V
Input voltage	V _{IN}	-0.5	5.0	V
Operating temperature	T _{OP}	-10	60	°C
Storage temperature	T _{ST}	-20	70	°C
Humidity	RH		90%(Max60°C)	RH

■ ELECTRICAL CHARACTERISTICS

DC CHARACTERISTICS

Parameter	Symbol	Min	Typ	Max	Unit
Logic power supply	V _{DD}	3.0	3.3	3.6	V
Input voltage	V _{IN}	0	-	V _{DD}	V
Input Current	I _{DD}	-	10.28	20.56	mA
Input voltage 'H' level	V _{IH}	0.8V _{DD}	-	V _{DD}	V
Input voltage 'L' level	V _{IL}	0	-	0.2 V _{DD}	V
Output voltage 'H' level	V _{OH}	0.9 V _{DD}	-	V _{DD}	V
Output voltage 'L' level	V _{OL}	0	-	0.1 V _{DD}	V

■ TIMING OF POWER SUPPLY

PLEASE REFER TO THE DRIVER IC SPECIFICATION.

■ BACKLIGHT CHARACTERISTICS

Item	Symbol	Min.	Typ.	Max.	Unit	Condition
Forward voltage	V _f	12.0	12.6	13.2	V	If=15*2 mA
Luminance	L _v	1500	2000	2500	cd/m ²	Ta=25°C
Number of LED	-	4*2			Piece	-
Connection mode	S	Series			-	-

Using condition: constant current driving method If= 15*2 mA (+/-10%)