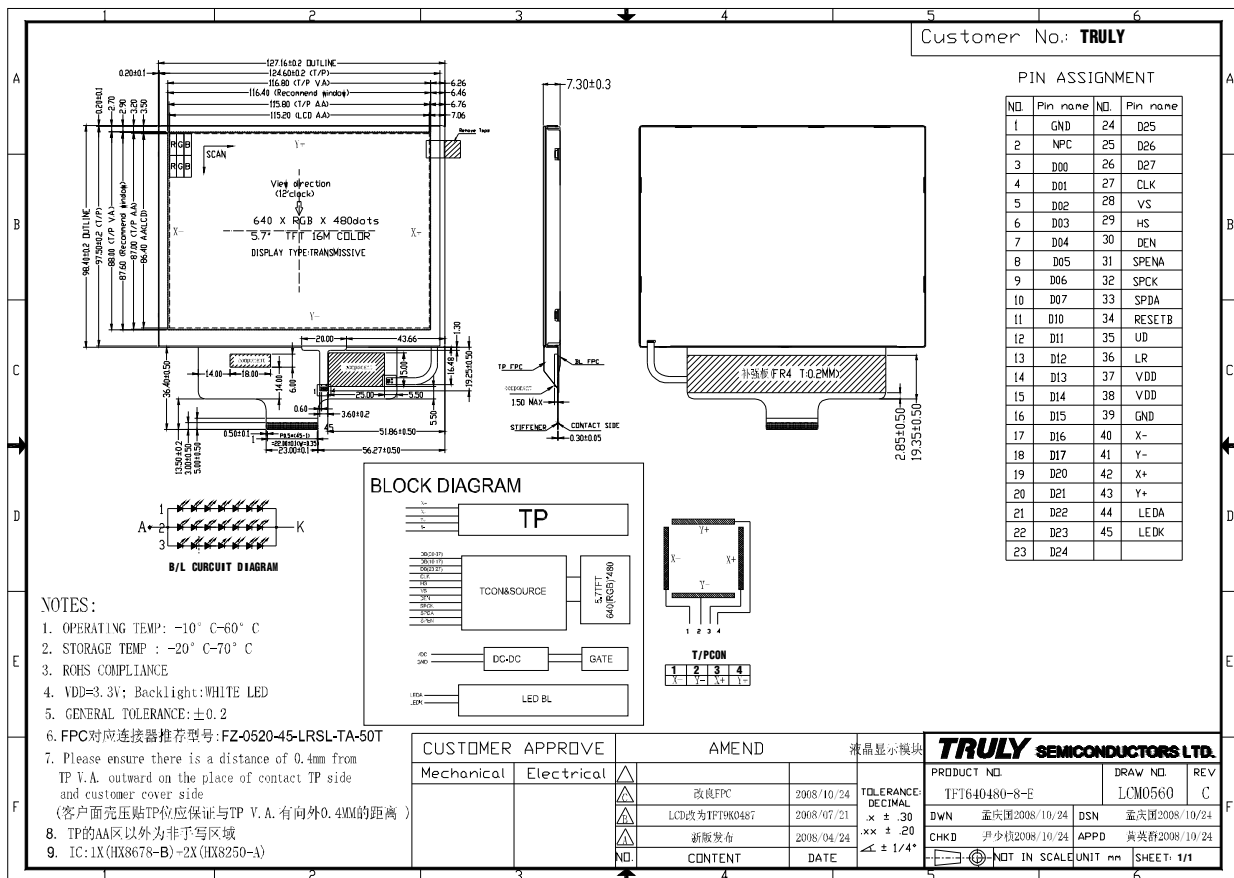


### GENERAL INFORMATION

Item	Contents	Unit
LCD type	TFT	/
Viewing direction	12:00 O' Clock	60° Clock (Good viewing)
Module area (W × H)	127.16 × 98.4	mm <sup>2</sup>
Viewing area (W×H)	116.8 × 88.0	mm <sup>2</sup>
Active area (W×H)	115.2 × 86.4	mm <sup>2</sup>
Number of Dots	640 × RGB × 480	/
Dot size (W × H)	0.06 × 0.18	mm <sup>2</sup>
Dot pitch (W × H)	0.18 × 0.18	mm <sup>2</sup>
Driver IC	HX8678;HX8250	/
Backlight Type	LED	/
Interface Type	Parallel RGB	/
Input voltage	3.3	V

### EXTERNAL DIMENSIONS



**n ABSOLUTE MAXIMUM RATINGS**

Parameter	Symbol	Min	Max	Unit
Power supply voltage	V <sub>DD</sub>	-0.3	7.0	V
Input voltage	V <sub>IN</sub>	-0.3	V <sub>DD</sub> +0.3	V
Operating temperature	T <sub>OP</sub>	-10	60	°C
Storage temperature	T <sub>ST</sub>	-20	70	°C
Humidity	RH		90%(Max60°C)	RH

**n ELECTRICAL CHARACTERISTICS**

## DC CHARACTERISTICS

Parameter	Symbol	Min	Typ	Max	Unit
Power supply voltage	V <sub>DD</sub>	2.7	3.3	3.6	V
Input Current	I <sub>dd</sub> (with FPC)	-	145	290	mA
Input voltage ' H ' level	V <sub>IH</sub>	0.7V <sub>DD</sub>	-	V <sub>DD</sub>	V
Input voltage ' L ' level	V <sub>IL</sub>	0	-	0.3V <sub>DD</sub>	V
Output voltage ' H ' level	V <sub>OH</sub>	0.7V <sub>DD</sub>	-	V <sub>DD</sub>	V
Output voltage ' L ' level	V <sub>OL</sub>	0	-	0.2 V <sub>DD</sub>	V

**n TIMING OF POWER SUPPLY**

PLEASE REFER TO THE DRIVER IC SPECIFICATION.

**n BACKLIGHT CHARACTERISTICS**

Item	Symbol	Min.	Typ.	Max.	Unit	Condition
Forward voltage	V <sub>f</sub>	-	22.2	-	V	If=60 mA
Luminance	L <sub>v</sub>	4800	5600	6600	cd/m <sup>2</sup>	
Number of LED	-	7 3 3			Piece	-
Connection mode	S/P	Series/Parallel			-	-

Using condition: constant current driving method If= 60 mA (+/-10%).