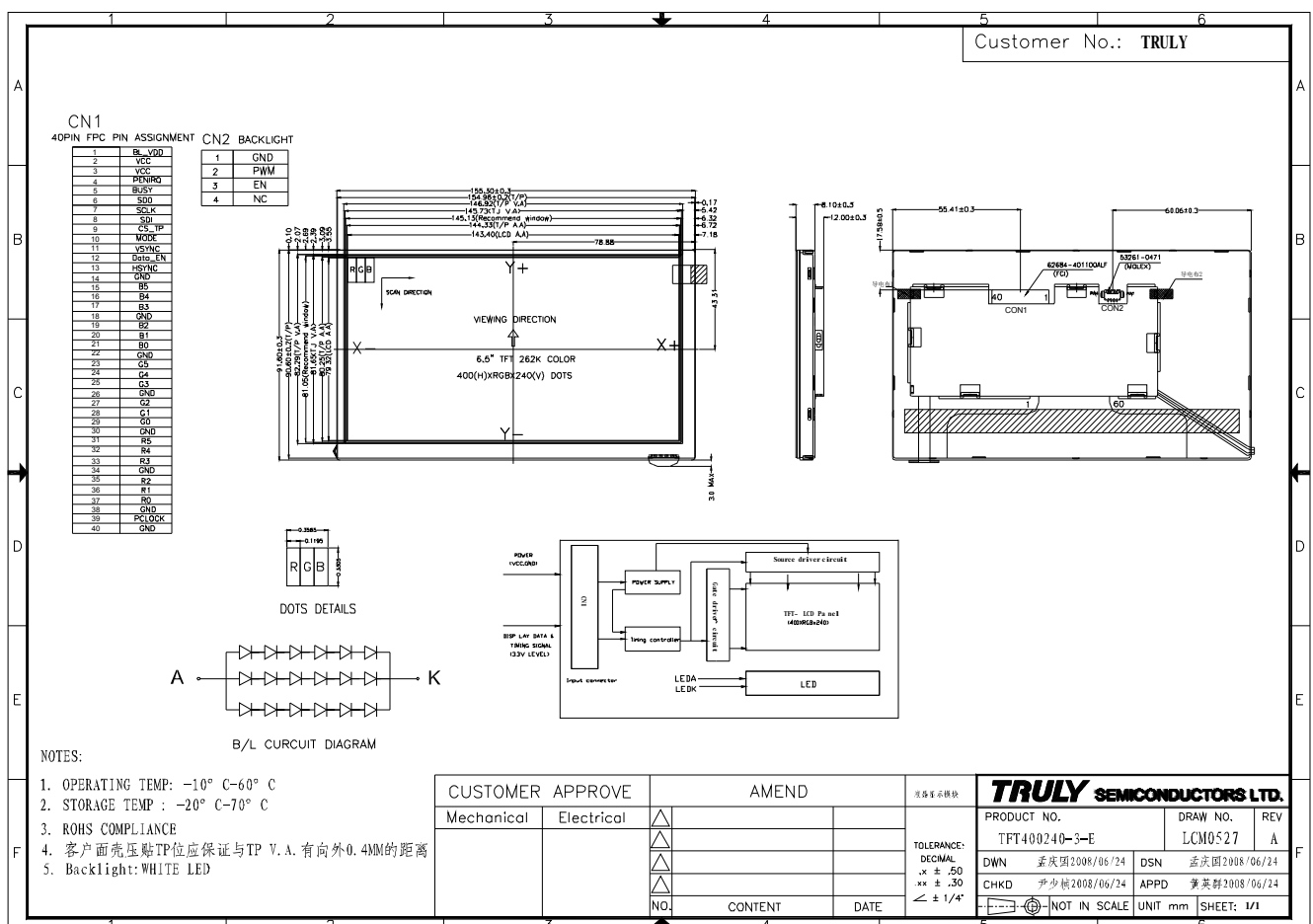


GENERAL INFORMATION

| Item | Contents | Unit |
|-------------------------------|-----------------------------------|-------------------------------|
| LCD type | TFT | / |
| Viewing direction | 6:00 O' Clock | 12 O' Clock (Good viewing) |
| Signal Interface | Digital Interface (CMOS TTL) | / |
| Display mode | Normally White, Transmitting Type | / |
| Outline Dimension (W × H × D) | 155.3 × 91.6 × 12.0 | mm ² |
| Active area (W×H) | 143.4 × 79.32 | mm ² |
| Number of Dots | 400 × 240 | / |
| Dot size (W × H) | 0.1195 × 0.3305 | mm ² |
| Screen size(inch) | 6.5"(Diagonal) | / |
| Backlight | LED | / |
| Color Depth | 262K | / |
| Gate driver | NT39327TH-D/4NA | / |
| Source driver | NT39406C1H-D/4IA | / |
| Module Power consumption | 1746 | mw |
| Weight | - | / |

EXTERNAL DIMENSIONS



■ABSOLUTE MAXIMUM RATINGS

| Parameter | Symbol | Min | Max | Unit |
|--------------------------|-----------------|------|--------------|------|
| Supply voltage for logic | V _{CC} | -0.3 | 6.0 | V |
| Operating temperature | T _{OP} | -10 | 60 | °C |
| Storage temperature | T _{ST} | -20 | 70 | °C |
| Humidity | RH | | 90%(Max60°C) | RH |

■ELECTRICAL CHARACTERISTICS

DC CHARACTERISTICS

| Parameter | Symbol | Min | Typ | Max | Unit |
|--------------------------|----------------------------------|--------------------|-----|--------------------|------|
| Supply voltage for logic | V _{CC} -V _{SS} | 2.7 | 3.3 | 3.5 | V |
| Input Current | I _{DD} | - | 180 | 360 | mA |
| Input voltage 'H' level | V _{IH} | 0.7V _{DD} | - | V _{DD} | V |
| Input voltage 'L' level | V _{IL} | 0 | - | 0.3V _{DD} | V |

■ BACKLIGHT CHARACTERISTICS

| Item | Symbol | Min. | Typ. | Max. | Unit | Condition |
|-----------------|----------------|-----------------|------|------|-------|--|
| Forward voltage | V _f | 18.0 | 19.2 | 20.4 | V | I _f =60 mA, T _a =25°C |
| Number of LED | - | 3*6 | | | Piece | - |
| Connection mode | S/P | Series/Parallel | | | - | - |

Using condition: constant current driving method I_f=60 mA (+/-10%)

■ TIMING OF POWER SUPPLY

PLEASE REFER TO THE DRIVER IC SPECIFICATION.