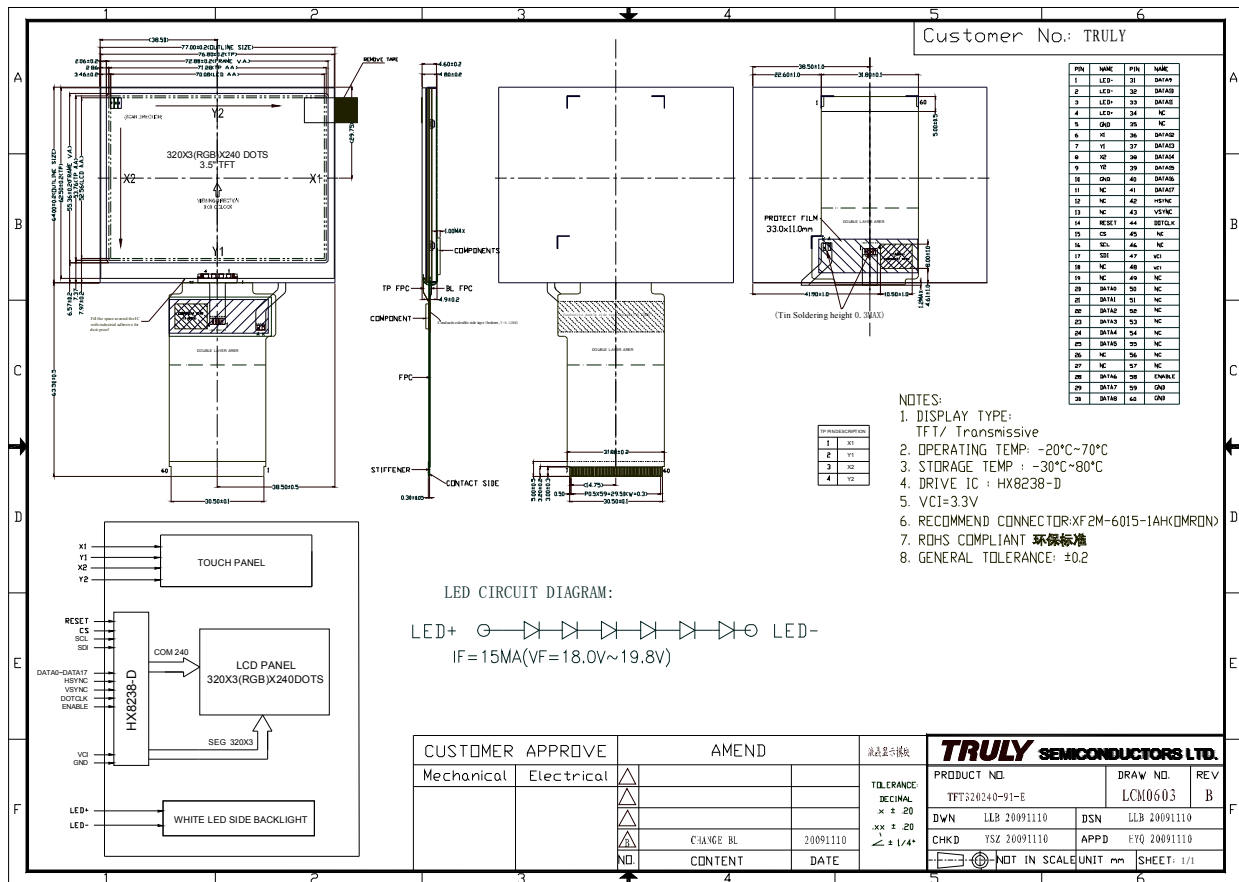


■ GENERAL INFORMATION

Item	Contents	Unit
LCD type	TFT/ Transmissive	/
Viewing direction	6:00	O' Clock
Module outline (W × H)	77.0 × 64.0	mm ²
Viewing area (W×H)	72.88 × 55.36	mm ²
Active area (W×H)	70.08 × 52.56	mm ²
Number of Dots	320 × 3(RGB) × 240	/
Pixel pitch (W × H)	0.219 × 0.219	mm ²
Driver IC	HX8238-D	/
Colors	262K	/
Backlight Type	LED	/
Interface Type	RGB+SPI Interface	/
Module Power consumption	409	mw
Input voltage	3.3	V

■ EXTERNAL DIMENSIONS



■ABSOLUTE MAXIMUM RATINGS

Parameter	Symbol	Min	Max	Unit
Supply voltage	V _{CI}	-0.3	4.0	
Operating temperature	T _{OP}	-20	70	°C
Storage temperature	T _{ST}	-30	80	°C
Humidity	RH		90%(Max60°C)	RH

■ELECTRICAL CHARACTERISTICS

DC CHARACTERISTICS

Parameter	Symbol	Min	Typ	Max	Unit
Power supply pin of IO pins	V _{CI}	2.5	3.3	3.6	V
Input Current	I _{dd}	-	11.13	22.26	mA
Input voltage ' H ' level	V _{IH}	0.8 V _{CI}	-	V _{CI}	V
Input voltage ' L ' level	V _{IL}	0	-	0.2 V _{CI}	V
Output voltage ' H ' level	V _{OH}	0.9 V _{CI}	-	V _{CI}	V
Output voltage ' L ' level	V _{OL}	0	-	0.1 V _{CI}	V

■ TIMING OF POWER SUPPLY

PLEASE REFER TO THE DRIVER IC SPECIFICATION.

■ BACKLIGHT CHARACTERISTICS

Item	Symbol	Min.	Typ.	Max.	Unit	Condition
Forward voltage	V _f	18.0	18.9	19.8	V	I _f =15 mA
Luminance	L _v	2000	2500	3000	cd/m ²	
Number of LED	-	6			Piece	-
Connection mode	S	Serial			-	-

Using condition: constant current driving method I_f= 15mA (+/-10%).