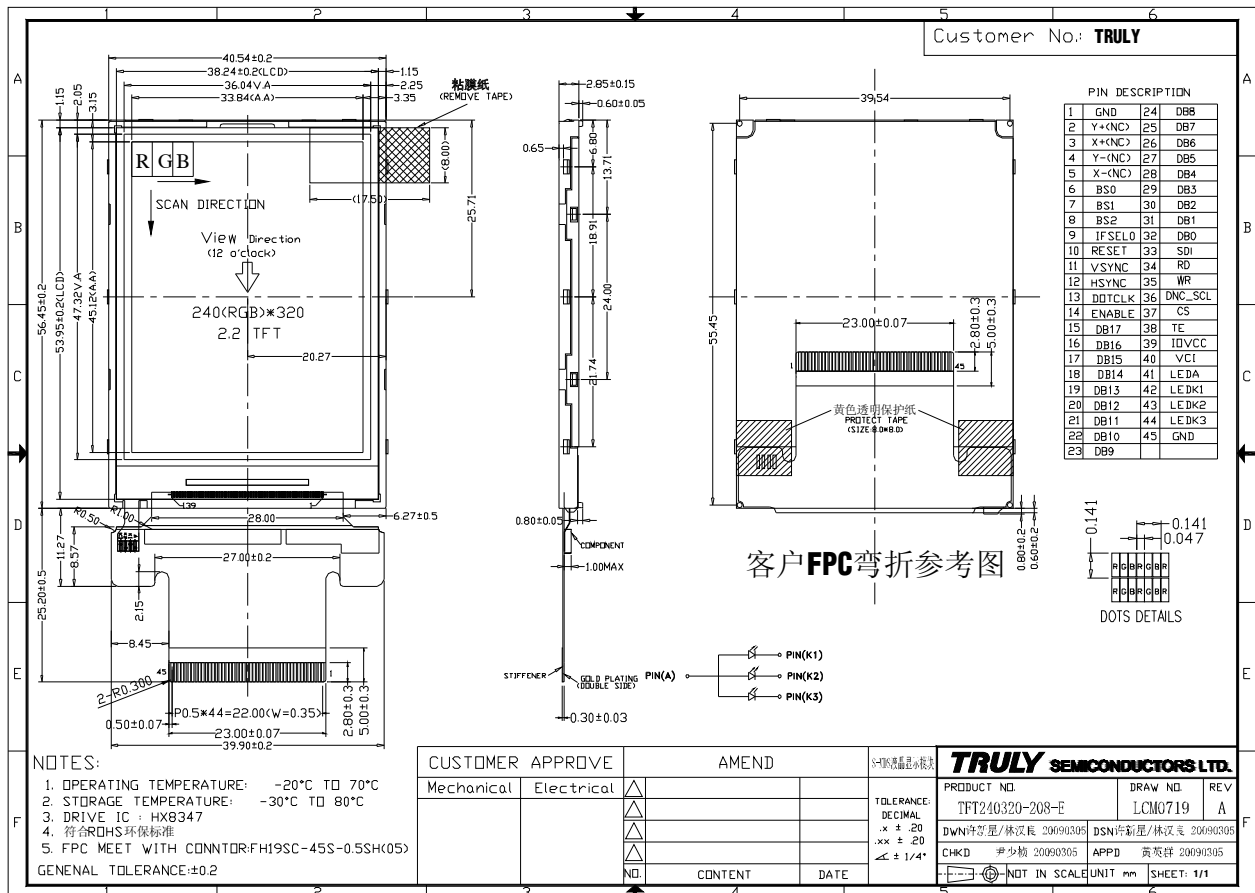


GENERAL INFORMATION

Item	Contents	Unit/Note
LCD type	TFT/TRANSMISSIVE	/
Viewing direction	12:00 O' Clock	6:00Clock(good viewing)
Module area (W × H)	40.54×56.45	mm ²
Viewing area (W × H)	36.04×47.32	mm ²
Active area (W×H)	33.84×45.12	mm ²
Number of Dots	240(RGB)×320	/
Pixel pitch (W × H)	0.141×0.141	mm ²
Driver IC	HX8347	/
Colors	262K	/
Backlight Type	LED	/
Module Power consumption	161	mw
Interface Type	System parallel interface; RGB parallel interface.	/
Input voltage	2.8	V
Module weight	11.2	g

EXTERNAL DIMENSIONS



nABSOLUTE MAXIMUM RATINGS

Parameter	Symbol	Min	Max	Unit
Supply voltage	V_{CI}/IOV_{CC}	-0.3	4.6	V
Input voltage	V_{IN}	-0.3	$IOV_{CC}+0.3$	V
Operating temperature	T_{op}	-20	70	°C
Storage temperature	T_{ST}	-30	80	°C
Humidity	RH	-	90%(Max60 °C)	RH

nELECTRICAL CHARACTERISTICS

DC CHARACTERISTICS

Parameter	Symbol	Min	Typ	Max	Unit
Supply voltage	$V_{CI} - V_{SS}$	2.7	2.8	2.9	V
I/O power supply	IOV_{CC}	1.7/2.7	1.8/2.8	1.9/2.9	V
Input Current	I_{dd}	-	4.28	6.42	mA
Input voltage 'H' level	V_{IH}	0.8 IOV_{CC}	IOV_{CC}	IOV_{CC}	V
Input voltage 'L' level	V_{IL}	-0.3	0	0.2 IOV_{CC}	V
Output voltage 'H' level	V_{OH}	0.8 IOV_{CC}	IOV_{CC}	IOV_{CC}	V
Output voltage 'L' level	V_{OL}	0	0	0.2 IOV_{CC}	V

n TIMING OF POWER SUPPLY

PLEASE REFER TO THE DRIVER IC SPECIFICATION.

n BACKLIGHT CHARACTERISTICS

Item	Symbol	Min.	Typ.	Max.	Unit	Condition
Forward voltage	V_f	3.0	3.2	3.4	V	
Luminance	L_v	2300	2700	3100	cd/m ²	If=45mA(15mA/LED)
Number of LED	-		3		Piece	
Connection mode	P		parallel		-	

Using condition: constant current driving method If=45mA (+/-10%).