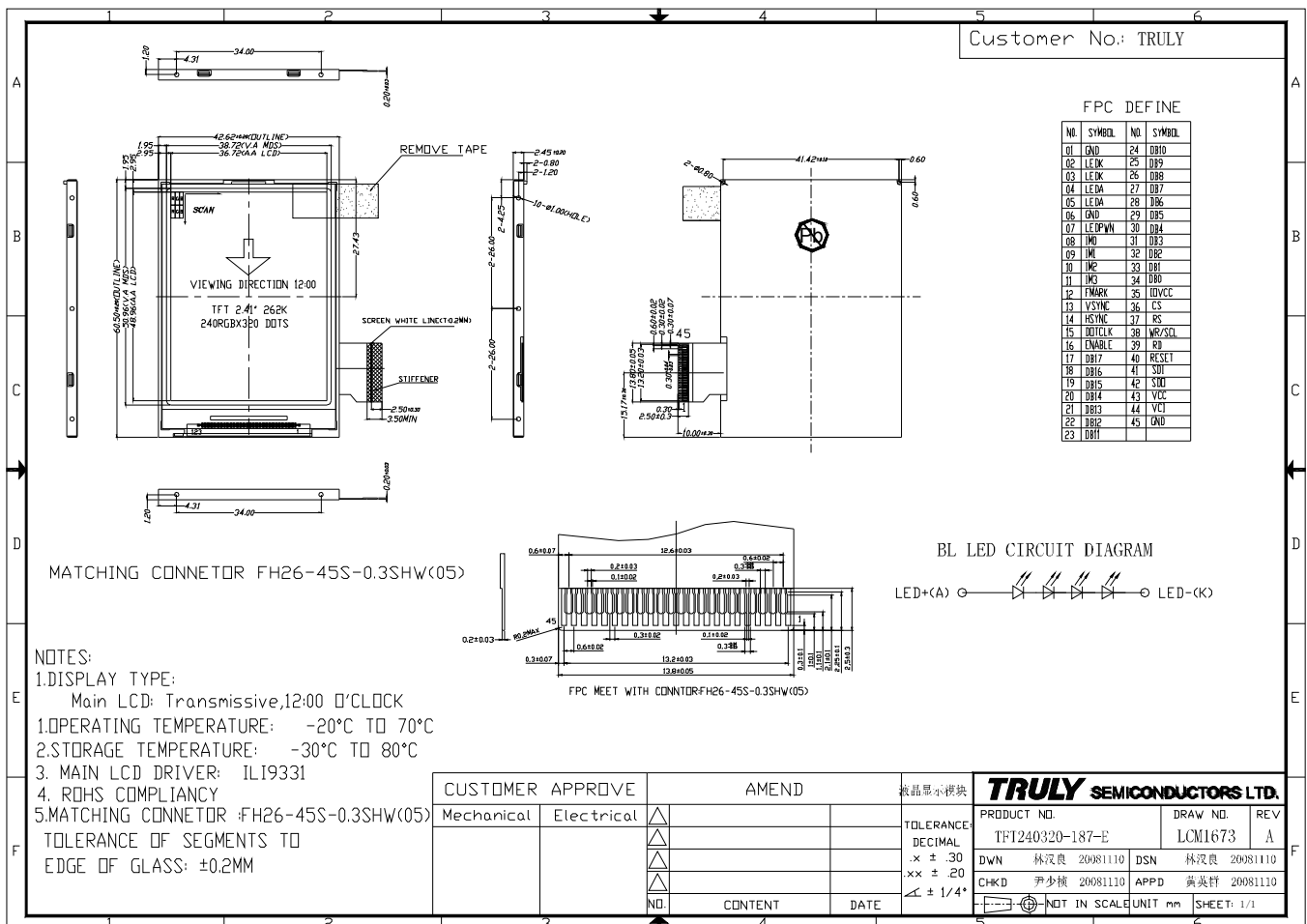


■ GENERAL INFORMATION

Item	Contents	Unit/note
LCD Type	TFT TRANSMISSIVE	/
Viewing direction	12:00 O' Clock	6 O' Clock (Good viewing)
Module area (W × H)	42.62 × 60.50	mm ²
Active area (W×H)	36.72 × 48.96	mm ²
Number of Dots	240 × RGB × 320	/
Driver IC	ILI9331	/
Backlight type	LED	/
Color	262K	/
Module Power consumption	276	mw
Interface Type	System parallel/serial/RGB interface	/
Input voltage	2.8	V
Weigh	12.1	g

■ EXTERNAL DIMENSIONS



■ ABSOLUTE MAXIMUM RATINGS

Parameter	Symbol	Min	Max	Unit
Supply voltage range	V _{CC} /IOV _{CC}	-0.3	4.6	V
Supply voltage range	V _{CI}	-0.3	4.6	V
Input voltage	V _{IN}	-0.3	V _{CC} +0.3	V
Operating temperature	T _{OP}	-20	70	°C
Storage temperature	T _{ST}	-30	80	°C
Humidity	RH	-	90%(Max60°C)	RH

■ ELECTRICAL CHARACTERISTICS

DC CHARACTERISTICS

Parameter	Symbol	Min	Typ	Max	Unit
Supply voltage for logic	V _{CC}	2.5	2.8	3.3	V
liquid crystal drive power supply voltage	V _{CI}	2.5	2.8	3.3	V
Supply voltage for I/O	IOV _{CC}	1.65	1.8/2.8	3.3	V
Input Current	I _{dd}	-	4.78	7.17	mA
Input voltage 'H' level	V _{IH}	0.8IOV _{CC}	-	IOV _{CC}	V
Input voltage 'L' level	V _{IL}	-0.3	-	0.2IOV _{CC}	V
Output voltage 'H' level	V _{OH}	0.8IOV _{CC}	-	-	V
Output voltage 'L' level	V _{OL}	-	-	0.2IOV _{CC}	V

■ TIMING OF POWER SUPPLY

PLEASE REFER TO THE DRIVER IC SPECIFICATION.

■ BACKLIGHT CHARACTERISTICS

Item	Symbol	Min.	Typ.	Max.	Unit	Condition
Forward voltage	V _f	12.0	12.8	13.6	V	If=18mA Ta=25°C
Luminance	L _v	4400	4900	5400	cd/m ²	
Number of LED	-	4			Piece	-
Connection mode	S	Serial			-	-

Using condition: constant current driving method If= 18 mA (+/-10%).