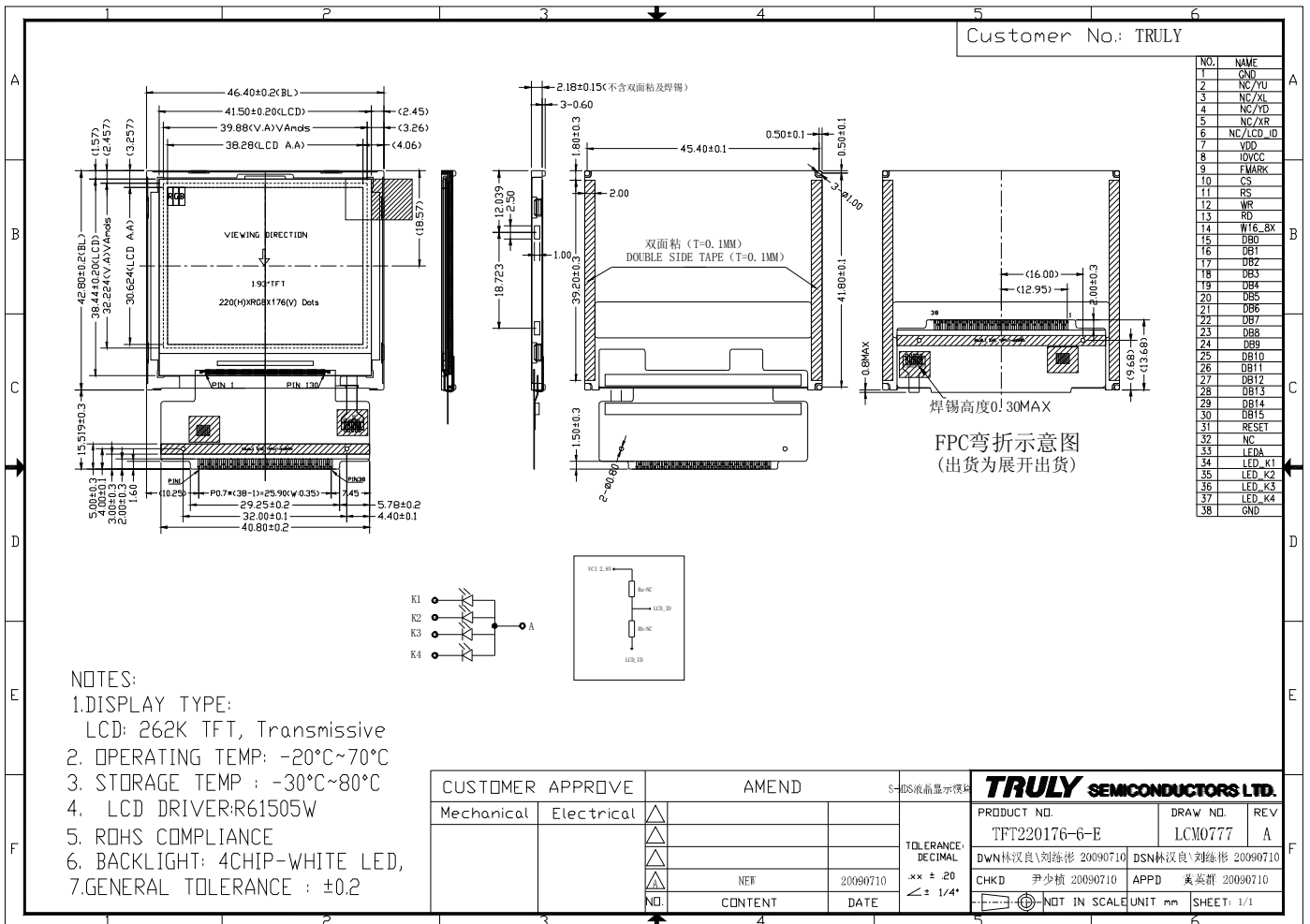


■ GENERAL INFORMATION

Item	Contents	Unit
LCD type	TFT/TRANSMISSIVE	/
Viewing direction	12:00 O' Clock	6:00O' Clock(Good viewing)
Module area (W × H)	46.4×42.8	mm ²
Viewing area (W×H)	39.88×32.22	mm ²
Active area (W×H)	38.28×30.62	mm ²
Number of Dots	220(RGB)×176	/
Pixel pitch (W × H)	0.174×0.174	mm ²
Driver IC	R61505W	/
Backlight Type	LED	/
Module Power consumption	234	mw
Interface Type	System parallel interface	/
Input voltage	2.8	V

■ EXTERNAL DIMENSIONS



■ ABSOLUTE MAXIMUM RATINGS

Parameter	Symbol	Min	Max	Unit
Supply voltage for logic	V _{DD}	-0.3	4.6	V
Input voltage	V _{IN}	-0.3	IOV _{CC} +0.3	V
Operating temperature	T _{op}	-20	70	°C
Storage temperature	T _{ST}	-30	80	°C
Humidity	RH	-	90%(Max60 °C)	RH

■ ELECTRICAL CHARACTERISTICS

DC CHARACTERISTICS

Parameter	Symbol	Min	Typ	Max	Unit
Supply voltage for logic	V _{DD} -V _{SS}	2.7	2.8	2.9	V
I/O power supply	IOV _{CC}	1.65	1.8/2.8	3.3	V
Input Current	I _{dd}	-	7.61	15.22	mA
Input voltage 'H' level	V _{IH}	0.8IOV _{CC}	-	IOV _{CC}	V
Input voltage 'L' level	V _{IL}	-0.3	-	0.2IOV _{CC}	V
Output voltage 'H' level	V _{OH}	0.8IOV _{CC}	-	-	V
Output voltage 'L' level	V _{OL}	-	-	0.2IOV _{CC}	V

■ TIMING OF POWER SUPPLY

PLEASE REFER TO THE DRIVER IC SPECIFICATION.

■ BACKLIGHT CHARACTERISTICS

Item	Symbol	Min.	Typ.	Max.	Unit	Condition
Forward voltage	V _f	3.0	3.2	3.4	V	If=60mA Ta=25°C
Luminance	L _v	4000	4500	5000	cd/m ²	
Number of LED		4			Piece	
Connection mode	P	Parallel				

Using condition: constant current driving method If=60mA (+/-10%).