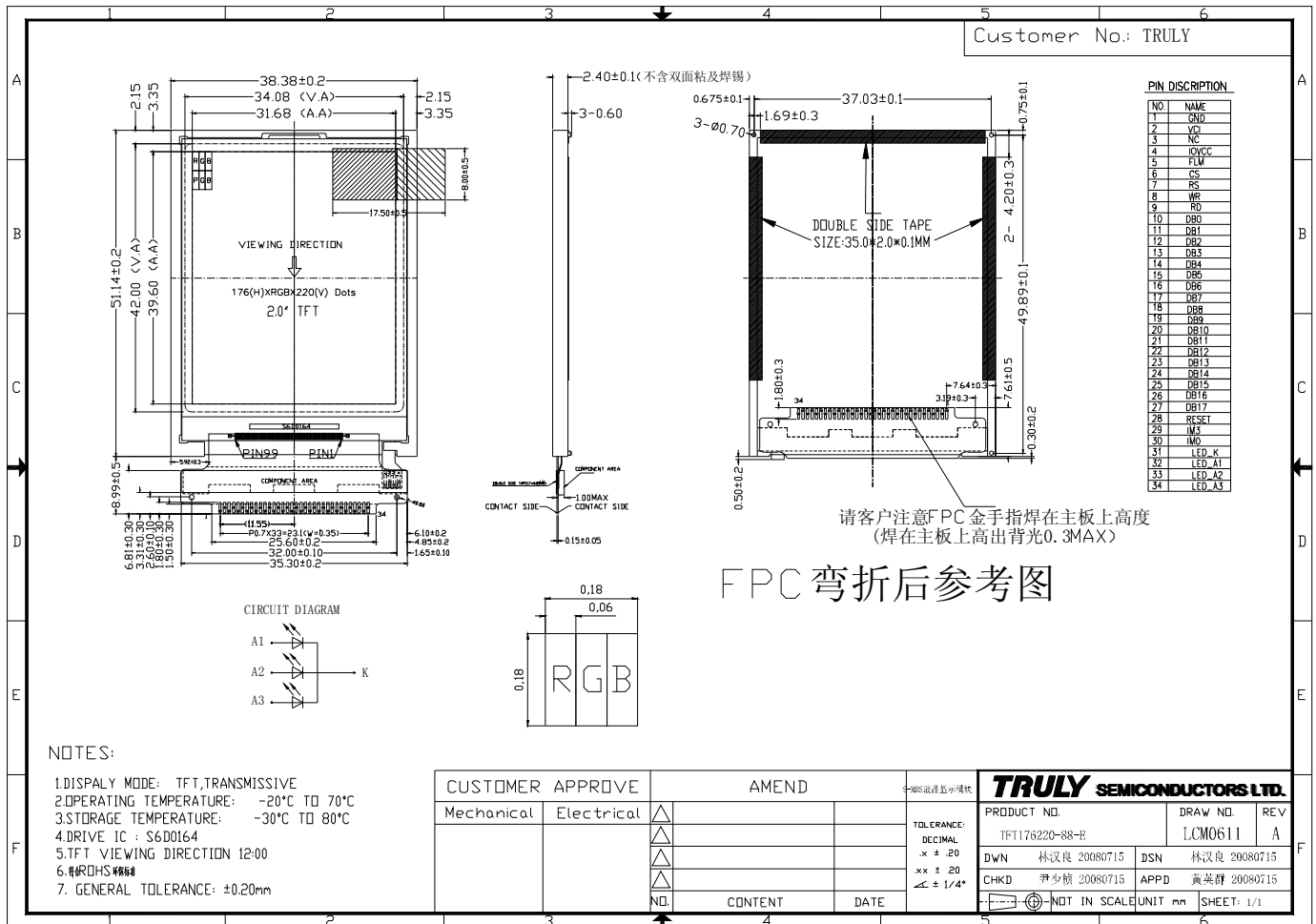


■ GENERAL INFORMATION

Item	Contents	Unit/note
LCD Type	TFT TRANSMISSIVE	/
Viewing direction	12:00 O' Clock	60' Clock (Good viewing)
Module area (W × H)	38.38×51.14	mm ²
Viewing area (W×H)	34.08×42.00	mm ²
Active area (W×H)	31.68×39.60	mm ²
Number of Dots	176 (RGB) × 220	/
Driver IC	S6D0164	/
Colors	262K	/
Backlight Type	LED	/
Module Power consumption	214	mw
Interface Type	CPU interface; parallel interface	/
Input voltage	2.8	V
Module weigh	6.5	g

■ EXTERNAL DIMENSIONS



■ ABSOLUTE MAXIMUM RATINGS

Parameter	Symbol	Min	Max	Unit
Supply voltage for I/O block	IOV _{CC}	-0.3	5.0	V
Supply voltage for step-up circuit	V _{CI}	-0.3	5.0	V
Input voltage	V _{IN}	-0.3	IOV _{CC} +0.3	V
Operating temperature	T _{OP}	-20	70	°C
Storage temperature	T _{ST}	-30	80	°C
Humidity	RH	-	90%(Max60°C)	RH

■ ELECTRICAL CHARACTERISTICS

DC CHARACTERISTICS

Parameter	Symbol	Min	Typ	Max	Unit
Operating voltage	IOV _{CC}	1.65	2.8	3.3	V
Internal reference power supply voltage	V _{CI}	2.5	2.8	3.3	V
Input Current	I _{DD}	-	7.89	15.78	mA
Input voltage 'H' level	V _{IH}	0.7 IOV _{CC}	-	IOV _{CC}	V
Input voltage 'L' level	V _{IL}	0	-	0.3 IOV _{CC}	V
Output voltage 'H' level	V _{OH}	0.8 IOV _{CC}	-	IOV _{CC}	V
Output voltage 'L' level	V _{OL}	0	-	0.2 IOV _{CC}	V

■ TIMING OF POWER SUPPLY

PLEASE REFER TO THE DRIVER IC SPECIFICATION.

■ BACKLIGHT CHARACTERISTICS

Item	Symbol	Min.	Typ.	Max.	Unit	Condition
Forward voltage	V _f	3.1	3.2	3.3	V	If=45 mA
Luminance	L _v	3000	3400	3800	cd/m ²	
Number of LED	-	3			Piece	-
Connection mode	P	Parallel			-	-

Using condition: constant current driving method If= 45 mA (+/-10%)